

NOW! Series

8' flat ceilings through-out, 42" overhead cabinets and Whirlpool appliances are just a FEW of the many "residential" features you'll find in every home from the Clayton Oxford NOW Series of affordably priced homes! Upgraded interior AND exterior options are available in many plans, unlike some factory-select-only homes sold by other manufacturers, so you CAN choose your own interior decor, wall decors, cabinet selections, vinyl flooring, carpet colors AND add popular options!

See floor plan on reverse side!

LOT MODEL
CLEARANCE
SALE!*



Plan Details

- ◆ 28 x 68
- ◆ 3 BR 2 BA
- ◆ Opt. 4th or 5th BR
- ◆ Opt. Study
- ◆ Family Room
- ◆ Living Room
- ◆ Dining Room



Display Model Options

- ◆ Duke Energy Package 22-11-28 TZ3
- ◆ 42" Destin White Cabs in Kitchen
- ◆ Frigidaire Dishwasher
- ◆ China Lavs ILO Plastic in Baths
- ◆ 54" Fiberglass Tub in Hall Bath
- ◆ Glamour Bath DW w/48" Shower and Mirrors

Starting at:

+N.C. Sales Tax

\$88,995.00*

**Display Model Price Only! Ask for 2019 Re-Order Price!*

**Due to increasing manufacturer building costs, price is subject to change without notice. Always ask for the most CURRENT price of any home you're interested in.*



901 E. Washington St.
Nashville, N.C. 27856
Phone: 252-459-7132

Hours:
Mon - Fri: 9:00am 5:00pm
(Winter Hours)

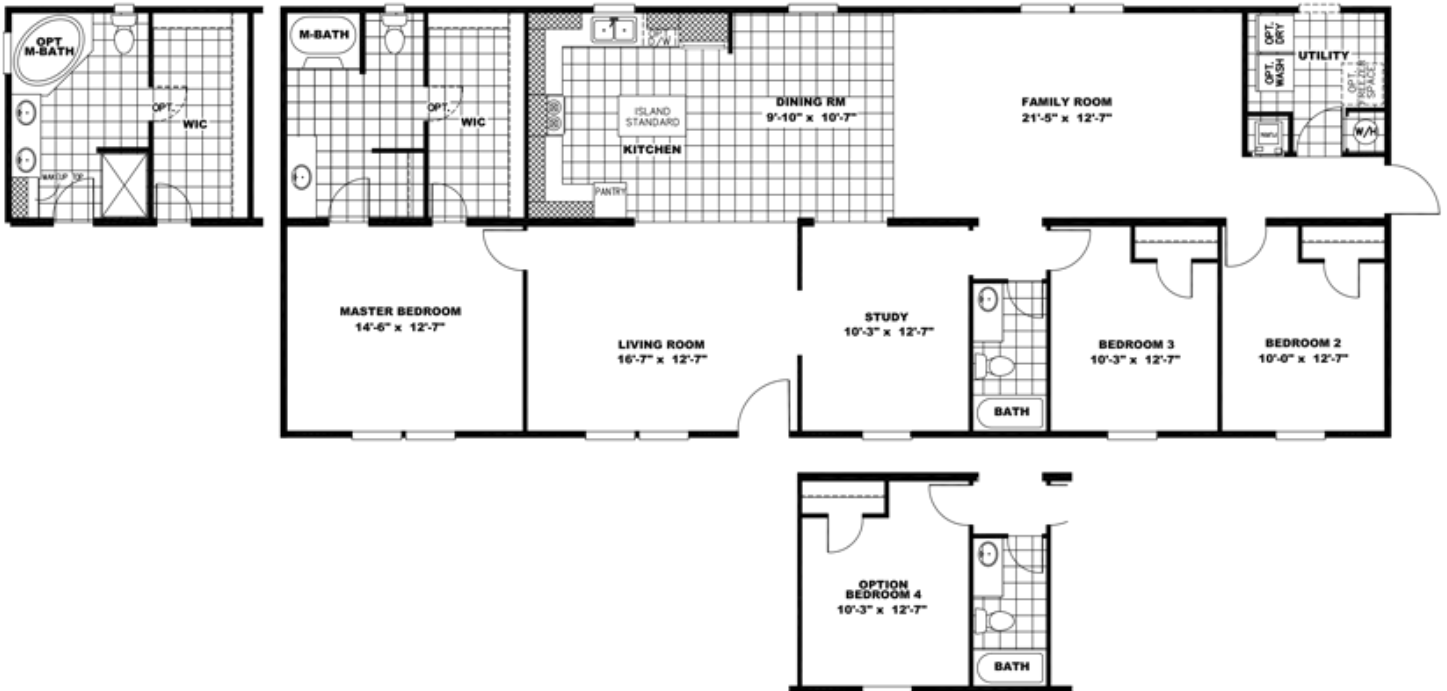
Connect With Us or Scan Code to Visit Our Website!



FHP121218

NOW! Series

- ◆ 28 x 68
- ◆ 3 BR 2 BA



Frank's Home Place Everyday Turn Key Price Includes:

- Local Delivery & Set Up in Wind Zone 1
- Max Set Up Height to 36"
- Vapor Barrier
- Electrical wiring from interior panel to existing exterior panel
- Plumbing connections made to existing connections under home



- 3 Ton 14 Seer Heat Pump
- Front Custom Built Treated Steps & 3' x 5' Rear Stoop w/steps
- Vinyl Skirting Installed
- All Permits (except septic)
- 1 Yr Manufacturer's Warranty on Home, Appliances, Heat/AC



See **MORE** information and photos on our website:

www.frankshomeplace.com